



**RYC Hollandia**

**Spring Cup 2017 OK Dinghy  
Nations Cup 2017 Solo**

**5-7 May 2017**

**IJsselmeer off Medemblik, the Netherlands**

**SAILING INSTRUCTIONS**

The Spring Cup 2017 for the OK Dinghy class and the Nations Cup 2017 for the Solo class will be held from 5 – 7 May inclusive. The event will be sailed on the IJsselmeer off Medemblik, the Netherlands.

The Organizing Authority (OA) is the Royal Yacht Club Hollandia.

Abbreviations:

[NP] A breach of this rule will not be grounds for protest by a boat.

[DP] Rules for which the penalties are at the discretion of the protest committee.

**1 RULES**

- 1.1 The regatta will be governed by the rules as defined in *The Racing Rules of Sailing*.
- 1.2 The prescriptions of the Royal Netherlands Yachting Union (RNYU) will apply. See [http://www.sailing.org/documents/racingrules/national\\_prescriptions.php](http://www.sailing.org/documents/racingrules/national_prescriptions.php)
- 1.3 Every person on board who has his domicile in the Netherlands shall be a member of a yacht club or other body affiliated to the RNYU and shall have the appropriate license.
- 1.4 If there is a conflict between languages the English text will take precedence.

**2 NOTICES TO COMPETITORS**

Notices to competitors will be posted on the official notice board(s) located near the race office.

**3 CHANGES TO SAILING INSTRUCTIONS**

Any change to the sailing instructions will be posted before 0800 on the day it will take effect, except that any change to the schedule of races will be posted by 2000 on the day before it will take effect.

**4 SIGNALS MADE ASHORE**

- 4.1 Signals made ashore will be displayed at the main flagpole of the Regatta Center Medemblik near the race office.

- 4.2 When flag AP is displayed ashore, '1 minute' is replaced with 'not less than 60 minutes' in the race signal AP.
- 4.3 When flag Y is displayed ashore, rule 40 applies at all times while afloat. This changes the Part 4 preamble.

## 5 SCHEDULE OF RACES AND EVENTS

- 5.1 Initial starting order: 1. OK Dinghy  
2. Solo

Please note that the starting order may be changed between races.

- 5.2 Racing and events are scheduled as follows:

Day/Date	Time	Race / event
Friday 5 May	0830	Registration open
	1200	Warning signal race 1
	a.s.a.p.	Warning signal race 2
	a.s.a.p.	Warning signal race 3
	t.b.a.	Happy Hour
Saturday 6 May	1030	Warning signal race 4
	a.s.a.p.	Warning signal race 5
	a.s.a.p.	Warning signal race 6
	1900	OK Dinner at Café Brakeboer
Sunday 7 May	1030	Warning signal race 7
	a.s.a.p.	Warning signal race 8
	After the last race	Prize giving
a.s.a.p. = races will start as soon as practicable at the discretion of the race committee.		

- 5.3 To alert boats that a race or sequence of races will begin soon, the orange starting line flag on the race committee signal vessel will be displayed with one sound for at least five (5) minutes before a warning signal is made.
- 5.4 On the last day of the regatta no warning signal will be made after 14.30 hrs except after a general recall.

## 6 CLASS FLAGS

Class flags will be:

<u>Class</u>	<u>Flag</u>
OK Dinghy	Code flag D
Solo	Code flag E

## 7 RACING AREA

Attachment A shows the location of racing area.

## 8 THE COURSE

- 8.1 The diagram in Attachment B shows the course, including the approximate angles between legs, the order in which marks are to be passed, and the side on which each mark is to be left.
- 8.2 No later than the warning signal, the race committee signal vessel will display the approximate compass bearing of the first leg.

## 9 MARKS

- 9.1 Marks to be used are described in Attachment B.
- 9.2 A race committee vessel signalling a change of a leg of the course is a mark as provided in instruction 12.2.

## 10 SPARE

## 11 THE START

- 11.1 Races will be started by using rule 26 with the warning signal made five (5) minutes before the starting signal. Intervals between the starts is ten (10) minutes.
- 11.2 The starting line will be between staffs displaying orange flags on the starting marks.
- 11.3 A race committee vessel may be positioned near the port end of the starting line. If possible this vessel will repeat the following Visual Signals of the race committee signal vessel: Flags X, and 1st Substitute.
- 11.4 **[DP] [NP]** Boats whose warning signal has not been made shall avoid the starting area during the starting sequence for other races. The Starting Area is defined as a rectangle overlapping the starting line by 100 meters in all directions.
- 11.5 A boat that does not start within four (4) minutes after her starting signal will be scored Did Not Start without a hearing. This changes rule A4.1 and A5.

## 12 CHANGE OF THE NEXT LEG OF THE COURSE

- 12.1 To change the next leg of the course, the race committee will move the original mark (or the finishing line) to a new position.
- 12.2 Boats shall pass between the race committee vessel signalling the change of the next leg and the nearby mark, leaving the mark to port and the race committee boat to starboard. This changes rule 28.1.

## 13 THE FINISH

The finishing line will be between staffs displaying orange flags on the finishing marks.

## 14 PENALTY SYSTEM

There is no International Jury appointed.

## 15 TIME LIMITS AND TARGET TIMES

- 15.1 Time limits and target times are as follows:

<b><i>Time limit</i></b>	<b><i>Mark 1 time limit</i></b>	<b><i>Target time</i></b>
90 minutes	30 minutes	50 minutes

If no boat has passed mark 1 within the mark 1 time limit the race committee shall abandon the race for that class.

Failure to meet the target time will not be grounds for redress. This changes rule 62.1(a).

15.2 Boats failing to finish within fifteen (15) minutes after the first boat of their class sails the course and finishes will be scored Did Not Finish, without a hearing. This changes rules 35, A4 and A5.

## **16 PROTESTS AND REQUESTS FOR REDRESS**

16.1 Protest forms are available at the race office, located at the Regatta Center Medemblik. Protests and requests for redress or reopening shall be delivered there within the appropriate time limit.

16.2 For each class, the protest time limit is 90 minutes after the last boat has finished the last race of the day or after instruction 15.2 has been applied to that race, or the race committee signals no more racing today, whichever is later.

16.3 Notices will be posted no later than 30 minutes after the protest time limit to inform competitors of hearings in which they are parties or named as witnesses. Hearings will be held in the protest room, located at the race office, beginning as soon as possible.

16.4 Notices of protests or requests for redress by the race committee, technical committee or protest committee will be posted to inform boats under rule 61.1(b).

16.6 Breaches of instructions marked with [NP] (10.4, 18, 22, 23 and 24) will not be grounds for protest by a boat. This changes rule 60.1(a). Penalties for these breaches may be less than disqualification if the protest committee so decides.

16.7 Penalties for breaches of instructions marked [DP] or class rules are at the discretion of the protest committee, but the World Sailing approved guidance will be followed.

16.8 A boat may accept a discretionary penalty for the breach of a rule subject to [DP] by acknowledging the breach before a hearing.

16.9 On the last scheduled day of racing a request for reopening a hearing shall be delivered

(a) within the protest time limit if the requesting party was informed of the decision on the previous day;

(b) no later than 30 minutes after the requesting party was informed of the decision on that day.

This changes rule 66.

16.10 On the last scheduled day of racing a request for redress based on a protest committee decision shall be delivered no later than 30 minutes after the decision was posted. This changes rule 62.2.

## **17 SCORING**

17.1 Four races are required to be completed to constitute a series..

17.2 (a) When fewer than five races have been completed, a boat's series score will be the total of her race scores.

(b) When five or more races have been completed, a boat's series score will be the total of her race scores excluding her worst score.

## **18 [NP] [DP] SAFETY REGULATIONS**

18.1 Each racing day, before the warning signal of the first race of that day, each boat shall pass upwind between the starboard side of the race committee signal vessel and a dan buoy with a green flag and have her sail number orally acknowledged by the race committee.

18.2 A boat that retires from a race or leaves the course area before racing shall notify the race committee as soon as possible.

18.3 Boats not leaving the harbor for a day's race shall inform the race office prior to the scheduled first warning signal of that day.

- 18.4 If any one of the race signals AP over A, AP over H, N over H or N over A is made on a race committee vessel, all boats of the class(es) concerned shall return to the harbor immediately.
- 18.5 Competitors shall wear personal flotation devices at all times while afloat, except briefly while changing or adjusting clothing or personal equipment.

## **19 [DP] REPLACEMENT OF EQUIPMENT**

Substitution of damaged or lost equipment will not be allowed unless authorized by the race committee. Requests for substitution shall be made to the committee at the first reasonable opportunity.

## **20 [DP] EQUIPMENT AND MEASUREMENT CHECKS**

- 20.1 A boat or equipment may be inspected at any time for compliance with the class rules and sailing instructions.
- 20.2 On the water, a boat can be instructed by a race committee equipment inspector or measurer for the event to proceed immediately to a designated area for inspection.

## **21 OFFICIAL BOATS**

Official boats will be marked as follows:

- a) Race committee vessels will fly a white flag with 'RC'.
- b) Orange rigid inflatable boats of the OA are marked 'Rescue' on the tubes and carry a grey outboard cover with the club insignia.

## **22 [NP] [DP] SUPPORT BOATS**

- 22.1 Except in case of emergency, team leaders, coaches and other support personnel shall stay outside areas where boats are racing and shall not communicate with boats from the time of the preparatory signal for the first class to start until all boats have finished or retired or the race committee signals a postponement, general recall or abandonment.
- 22.2 Support boats shall be marked with The National Flag of the country they represent.

## **23 [NP] [DP] TRASH DISPOSAL**

Trash may be placed aboard support boats and race committee vessels. A competitor shall not drop trash in the dinghy park.

## **24 [NP] [DP] RADIO COMMUNICATION**

Except in an emergency, a boat that is racing shall not make voice or data transmissions and shall not receive voice or data communications that is not available to all boats.

## **25 PRIZES**

Prizes will be given as follows: A series prize for every six boats entered in time. The respective class associations may award special prizes.

## **26 DISCLAIMER OF LIABILITY**

Competitors participate in the regatta entirely at their own risk. See rule 4, Decision to Race. The OA will not accept any liability for material damage or personal injury or death sustained in conjunction with or prior to, during, or after the regatta.

## **27 INSURANCE**

Each participating boat shall be insured with valid third-party liability insurance with a minimum cover of € 1,500,000 per incident or the equivalent.

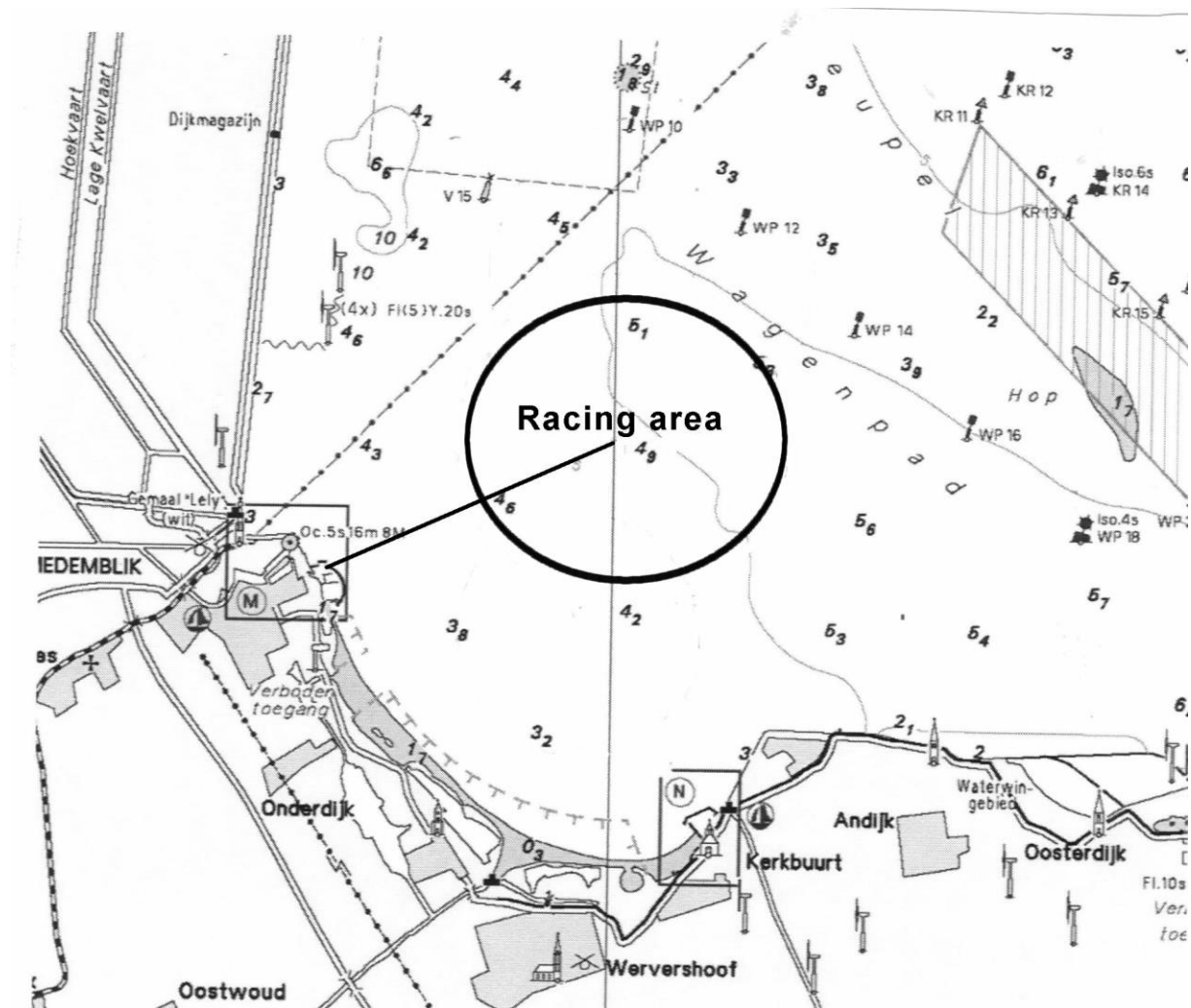
## ATTACHMENT A

### APPROXIMATE POSITION RACING AREA

Harbor (Regatta Center) – Racing Area (midpoint)

Distance: approx. 1,6 NM

Compass bearing: approx. 70°



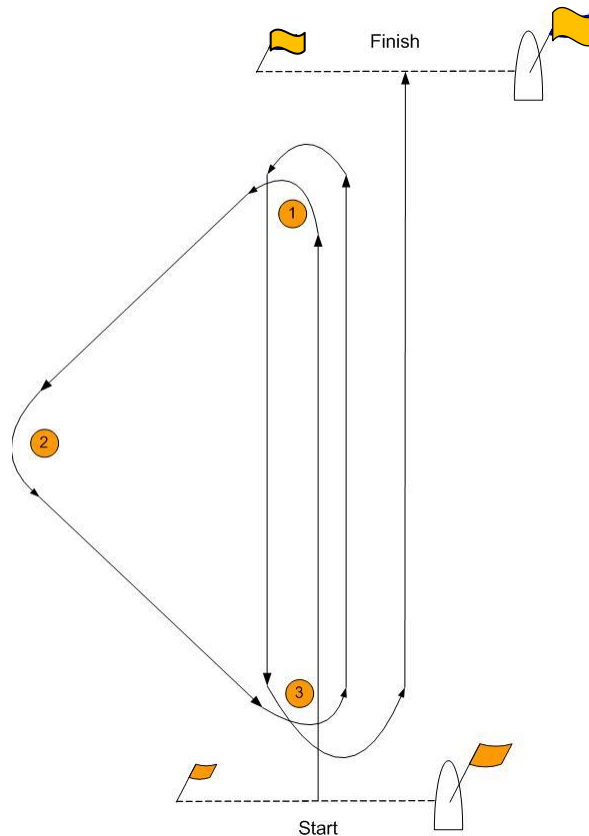
## ATTACHMENT B

### COURSES AND MARKS

#### MARKS:

Port-end starting mark:	a dan buoy with an orange flag
Starboard-end starting mark:	the RC signal vessel displaying an orange flag
Port-end finishing mark:	a dan buoy with an orange flag
Starboard-end finishing mark:	a RC vessel displaying an orange flag
Marks 1, 2 and 3:	orange inflatable cylindrical shapes

**Please note: Marks are not numbered**



start-1-2-3-1-3-finish