



RYC Hollandia

Spring Cup 2012

**J/24, J/22, MaxFun 25, Melges24
12-13 May 2012
Medemblik, the Netherlands**

SAILING INSTRUCTIONS

The Spring Cup 2011 for the J/24, J/22, MaxFun25 and Melges24 classes organized by the Royal Yacht Club Hollandia and will be sailed from 12-13 May inclusive, on the IJsselmeer off Medemblik, the Netherlands.

The Organizing Authority (OA) is the Royal Yacht Club Hollandia.

1 RULES

- 1.1 The regatta will be governed by the rules as defined in *The Racing Rules of Sailing*.
- 1.4 If there is a conflict between languages the English text will take precedence.

2 NOTICES TO COMPETITORS

Notices to competitors will be posted on the official notice board(s) located near the regatta office.

3 CHANGES TO SAILING INSTRUCTIONS

Any change to the sailing instructions will be posted before 0800 on the day it will take effect, except that any change to the schedule of races will be posted by 2000 on the day before it will take effect.

4 SIGNALS MADE ASHORE

- 4.1 Signals made ashore will be displayed at the signalling mast just outside of the regatta office.
- 4.2 When flag AP is displayed ashore, '1 minute' is replaced with 'not less than 60 minutes' in the race signal AP.
- 4.3 When flag Y is displayed ashore, rule 40 applies at all times while afloat. This changes the Part 4 preamble.

5 SCHEDULE OF RACES

- 5.1 Starting order:
1. Melges24
 2. J/22
 3. J/24
 4. MaxFun25

- 5.2 Racing is scheduled as follows:

Day/Date	Time	Race/event
Saturday 12 May	0830	Registration open
	0900-1030	Crew weighting (only J/22 class)
	1200	Warning signal race 1
	a.s.a.p.	Warning signal race 2
	a.s.a.p.	Warning signal race 3
Sunday 13 May	1030	Warning signal race 4
	a.s.a.p.	Warning signal race 5
	a.s.a.p.	Warning signal race 6
Sunday 13 May	After the last race	Prize giving

a.s.a.p. = races will start as soon as practicable at the discretion of the RC.
No warning signal will be made after 1530 on the last day of the regatta

- 5.3 After a long postponement, to alert boats that a race or sequence of races will begin soon, an orange flag will be displayed with one sound for at least four minutes before a warning signal is displayed.

6 CLASS FLAGS

Class flags will be:

<u>Class</u>	<u>Flag</u>
Melges24	Code flag 'D'
J/22	Code flag 'E'
J/24	Code flag 'R'
MaxFun25	Code flag 'G'

7 RACING AREAS

Attachment A shows the location of racing areas. The Starting Area is defined as a rectangle covering the area 100 meters to both windward and leeward of the Starting Line and 100 meters to both port and starboard of either end of the Starting Line.

8 THE COURSES

- 8.1 The diagrams in Attachment B show the courses, including the approximate angles between legs, the order in which marks are to be passed, and the side on which each mark is to be left.

- 8.2 No later than the warning signal, the race committee signal boat will display the approximate compass bearing of the first leg.

9 MARKS

- 9.1 Marks to be used are described in Attachment B.
9.2 A race committee boat signalling a change of a leg of the course is a mark as provided in instruction 12.2.

10 THE START

- 10.1 Races will be started by using rule 26 with the warning signal made 5 minutes before the starting signal. Intervals between the starts is 5 minutes.
10.2 The starting line will be between a staff displaying an orange flag on the race committee signal boat at the Starboard-end a dan buoy with an orange flag at the Port-end.
10.3 A line boat may be positioned near the port end of the starting line. If possible the line boat will repeat the following Visual Signals of the race committee signal boat: Flags X, and 1st Substitute.
10.4 Boats whose warning signal has not been made shall avoid the starting area during the starting sequence for other races.
10.5 A boat starting later than 4 minutes after her starting signal will be scored Did Not Start without a hearing. This changes rules A4 and A5.

11 RECALLS

If Rule 30.3 has been broken by one or more boats, a race committee boat near Mark 1 will, if possible, display the Black Flag and display the sail numbers of the boats concerned and, if possible, make repetitive sound signals.

12 CHANGE OF THE NEXT LEG OF THE COURSE

- 12.1 To change the next leg of the course, the race committee will move the original mark (or the finishing line) to a new position.
12.2 Except at a gate, boats shall pass between the race committee boat signalling the change of the next leg and the nearby mark, leaving the mark to port and the race committee boat to starboard. This changes rule 28.1.

13 THE FINISH

The finishing line will be between a staff displaying a Blue Flag on a race committee boat (Starboard end) and a dan boy with a blue flag (Port end).

14 PENALTY SYSTEM

- 14.1 For the Melges24 class rule 44.1 is changed so that the Two-Turns Penalty is replaced by the One-Turn Penalty.
14.2 As provided in rule 67, the protest committee may, without a hearing, penalize a boat that has broken rule 42.

15 TIME LIMITS AND TARGET TIMES

15.1 Time limits and target times are as follows:

<u>Class</u>	<u>Time Limit</u>	<u>Target Time</u>
All	90 min.	60 min.

Failure to meet the target time will not be grounds for redress. This changes rule 62.1(a).

15.2 Boats failing to finish within 15 minutes after the first boat sails the course and finishes will be scored Did Not Finish without a hearing. This changes rules 35, A4 and A5.

16 PROTESTS AND REQUESTS FOR REDRESS

16.1 Protest forms are available at the regatta office, located at the ISC Medemblik. Protests and requests for redress or reopening shall be delivered there within the appropriate time limit.

16.2 For each class, the protest time limit is 90 minutes after the last boat has finished the last race of the day or after instruction 15.2 has been applied to that race or after that race has been abandoned or postponed to another day.

16.3 Notices will be posted no later than 30 minutes after the protest time limit to inform competitors of hearings in which they are parties or named as witnesses. Hearings will be held in the protest room, located at the ISCM, beginning as soon as possible.

16.4 Notices of protests by the race committee or protest committee will be posted to inform boats under rule 61.1(b).

16.5 A list of boats that, under instruction 14.3, have been penalized for breaking rule 42 will be posted.

16.6 Breaches of instructions 10.4, 18, 21, 22, 23, 24, 25, and 26 will not be grounds for a protest by a boat. This changes rule 60.1(a). Penalties for these breaches may be less than disqualification if the protest committee so decides. The scoring abbreviation for a discretionary penalty imposed under this instruction will be DPI.

16.7 On the last scheduled day of racing a request for reopening a hearing shall be delivered

(a) within the protest time limit if the requesting party was informed of the decision on the previous day;

(b) no later than 30 minutes after the requesting party was informed of the decision on that day.

This changes rule 66.

16.8 On the last scheduled day of racing a request for redress based on a protest committee decision shall be delivered no later than 30 minutes after the decision was posted. This changes rule 62.2.

17 SCORING

17.1 Four races are required to be completed to constitute a series.

17.2 J/22 class:

Each boat's score will be the total of her race scores without discard. This changes Rule A2.

All other classes:

- (a) When fewer than five races have been completed, a boat's series score will be the total of her race scores.
- (b) When five or more races have been completed, a boat's series score will be the total of her race scores excluding her worst score.

18 SAFETY REGULATIONS

18.1 A boat that retires from a race shall notify the race committee as soon as possible.

18.2 Boats not leaving the harbor for a day's race shall inform the regatta office prior to the start.

18.3 If any one of the race signals AP over A, or AP over H, or N over H, or N over A is made on a race committee boat, all boats of the class(es) concerned shall return to the harbor immediately.

18.4 While afloat it is strongly recommended to wear adequate personal buoyancy under all circumstances.

19 REPLACEMENT OF CREW OR EQUIPMENT

19.1 Substitution of competitors will not be allowed without prior written approval of the race committee.

19.2 Substitution of damaged or lost equipment will not be allowed unless authorized by the race committee. Requests for substitution shall be made to the committee at the first reasonable opportunity.

20 EQUIPMENT AND MEASUREMENT CHECKS

A boat or equipment may be inspected at any time for compliance with the class rules and sailing instructions. On the water, a boat can be instructed by a race committee equipment inspector or measurer to proceed immediately to a designated area for inspection.

21 OFFICIAL BOATS

Official boats will be marked as follows:

- a) Race committee boats will fly a white flag with 'RC'.
- b) Orange rigid inflatable boats of the OA are marked 'Rescue' on both sides of the hull and carry a blue outboard cover with the club insignia.
- c) Jury boats will fly a yellow flag with 'Jury' or 'IJ'.

22 SUPPORT BOATS

- 22.1 Except in case of emergency, team leaders, coaches and other support personnel shall stay outside areas where boats are racing and shall not communicate with boats from the time of the preparatory signal for the first class to start until all boats have finished or retired or the race committee signals a postponement, general recall or abandonment.
- 22.2 Support boats shall be marked with The National Flag of the country they represent.

23 TRASH DISPOSAL

Boats shall not put trash in the water. Trash may be placed aboard support and race committee boats.

24 HAUL-OUT RESTRICTIONS

Boats shall not be hauled out during the regatta except with and according to the terms of prior written permission of the race committee.

25 DIVING EQUIPMENT AND PLASTIC POOLS

Underwater breathing apparatus and plastic pools or their equivalent shall not be used around keelboats between the preparatory signal of the first race and the end of the regatta.

26 RADIO COMMUNICATION

Except in an emergency, a boat shall neither make radio transmissions while racing nor receive radio communications not available to all boats. This restriction also applies to mobile telephones.

27 PRIZES

Prizes will be given as follows: A series prize for every six boats entered in time.

28 DISCLAIMER OF LIABILITY

Competitors participate in the regatta entirely at their own risk. See rule 4, Decision to Race. The organizing authority will not accept any liability for material damage or personal injury or death sustained in conjunction with or prior to, during, or after the regatta.

29 INSURANCE

Each participating boat shall be insured with valid third-party liability insurance with a minimum cover of € 1,500,000 per event or the equivalent.

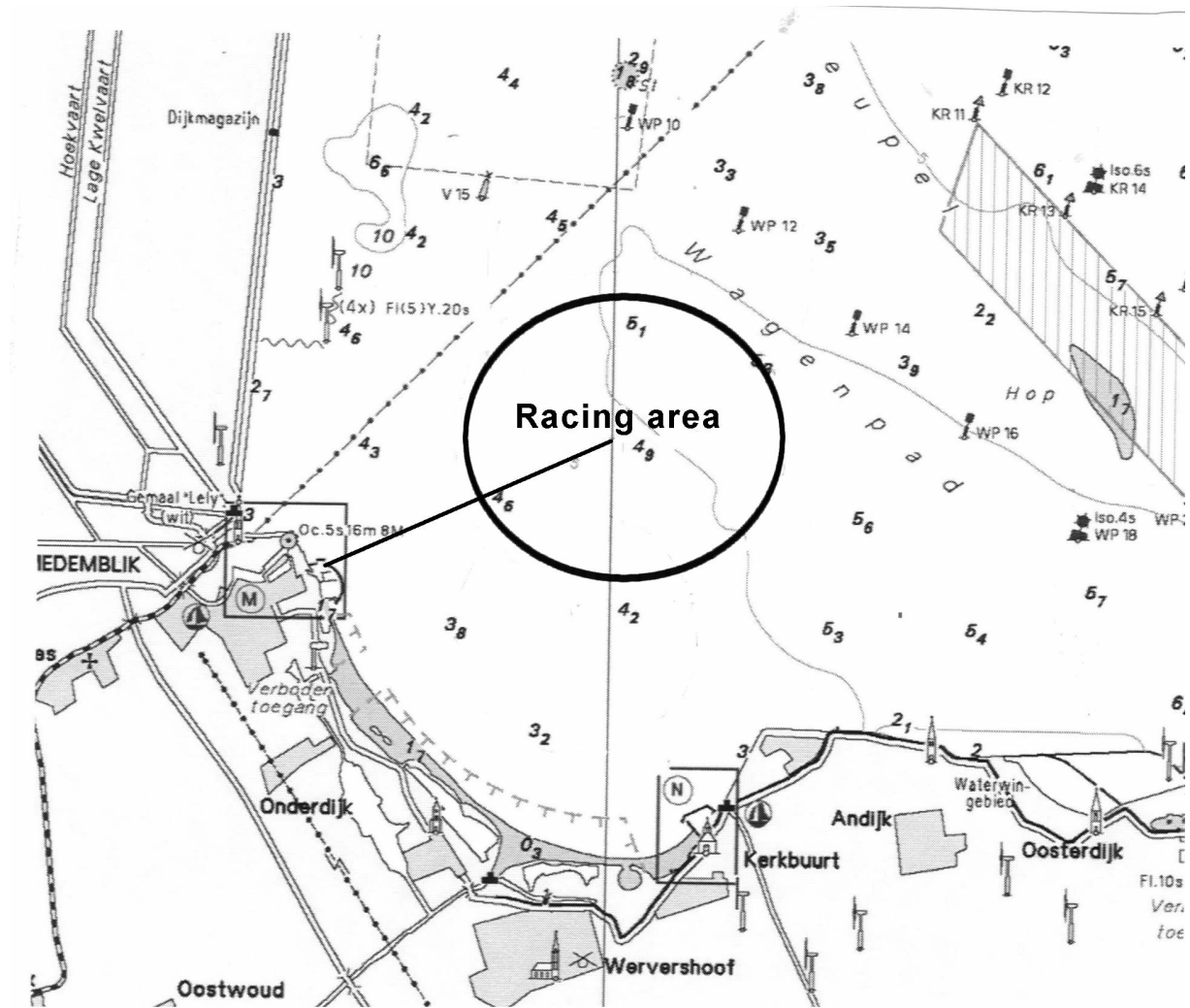
ATTACHMENT A

APPROXIMATE POSITION RACING AREA

Harbor (Regatta Center) – Racing Area (midpoint)

distance: approx. 1,8 NM

compass bearing: approx. 70°



ATTACHMENT B

MARKS:

Port-end starting mark:

a dan buoy with an orange flag

Starboard-end starting mark:

a staff or mast with an orange flag on the RC Signal boat

Marks 1 and 2:

orange inflatable cubical shapes

Gate Marks 3 and 3A

orange inflatable cubical shapes

Please note: Marks are not numbered

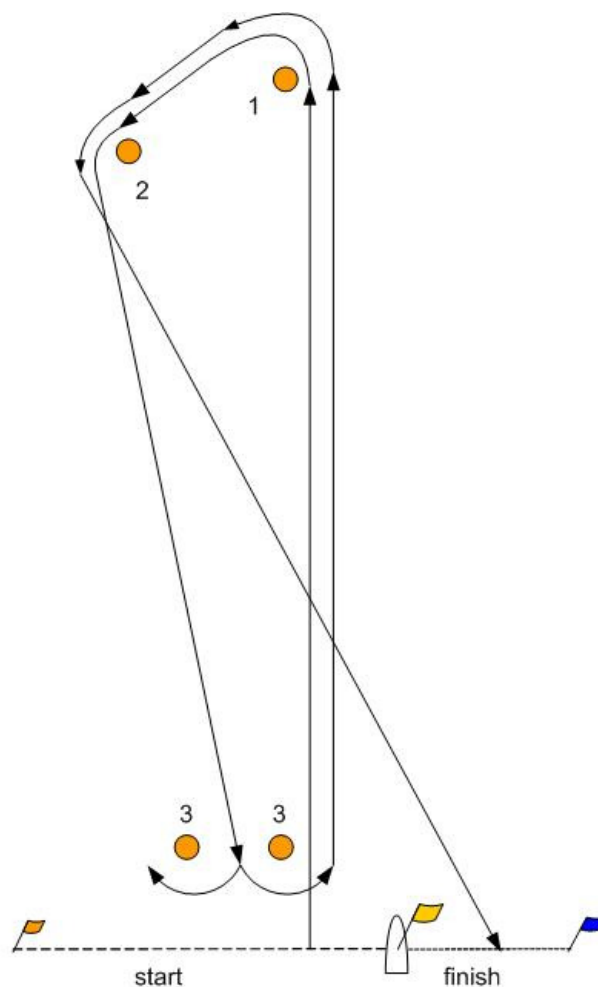
Starboard end finishing mark:

a staff or mast with a blue flag on the RC boat

Port end finishing mark

a dan buoy with a blue flag

Courses will be upwind/downwind with spreader mark and downwind gate (this changes the Notice of Race)



Course : 1-2-3(gate)-1-2-finish