



**RYC Hollandia**

## **2013 Hollandia Trophy for the Kielzugvogel class**

# **SAILING INSTRUCTIONS**

The 2013 Hollandia Trophy for the Kielzugvogel class is organized by the Royal Yacht Club Hollandia and will be sailed from 28-30 June 2013 inclusive, on the IJsselmeer off Medemblik, the Netherlands.

The Organizing Authority (OA) is the Royal Yacht Club Hollandia.

### **1 RULES**

- 1.1 The regatta will be governed by the rules as defined in *The Racing Rules of Sailing*.
- 1.2 If there is a conflict between languages the English text will take precedence.

### **2 NOTICES TO COMPETITORS**

Notices to competitors will be posted on the official notice board(s) located near the regatta office.

### **3 CHANGES TO SAILING INSTRUCTIONS**

Any change to the sailing instructions will be posted before 0800 on the day it will take effect, except that any change to the schedule of races will be posted by 2000 on the day before it will take effect.

### **4 SIGNALS MADE ASHORE**

- 4.1 Signals made ashore will be displayed from the main flagpole just outside of the regatta office.
- 4.2 When flag AP is displayed ashore, '1 minute' is replaced with 'not less than 60 minutes' in the race signal AP.
- 4.3 When flag Y is displayed ashore, rule 40 applies at all times while afloat. This changes the Part 4 preamble.

## 5 SCHEDULE OF RACES

5.1 Racing is scheduled as follows:

Day/Date	Time	Race/event
Friday 28 June	08.30	Registration
	12.00	Warning Signal Race 1
Friday 28 June	asap	Warning Signal Race 2
Saturday 29 June	10.30	Warning Signal Race 3
	asap	Warning Signal Race 4
	asap	Warning Signal Race 5
Sunday 30 June	10.30	Warning Signal Race 6
a.s.a.p. = races will start as soon as practicable at the discretion of the RC No warning signal will be made after 15.00 on Sunday 30 June.		

5.2 After a long postponement, to alert boats that a race or sequence of races will begin soon, an orange flag will be displayed with one sound for at least four minutes before a warning signal is made.

## 6 CLASS FLAGS

The Class flag will be: Blue flag with Kielzugvogel logo.

## 7 RACING AREAS

Attachment A shows the location of racing area. The Starting Area is defined as a rectangle covering the area 100 meters to both windward and leeward of the Starting Line and 100 meters to both port and starboard of either end of the Starting Line.

## 8 THE COURSES

8.1 The diagrams in Attachment B show the courses, including the approximate angles between legs, the order in which marks are to be passed, and the side on which each mark is to be left.

8.2 No later than the warning signal, the race committee signal boat will display the approximate compass bearing of the first leg.

## 9 MARKS

9.1 Marks to be used are described in Attachment B.

9.2 A race committee boat signalling a change of a leg of the course is a mark as provided in instruction 12.2.

## 10 THE START

10.1 Races will be started by using rule 26 with the warning signal made 5 minutes before the starting signal.

10.2 The starting line will be between a staff displaying an orange flag on the race committee signal boat at the Starboard-end a dan buoy with an orange flag at the Port-end.

10.3 A line boat may be positioned near the port end of the starting line. If possible the line boat will repeat the following Visual Signals of the race committee signal boat: Flags X, and 1st Substitute.

10.4 A boat starting later than 4 minutes after her starting signal will be scored Did Not Start without a hearing. This changes rules A4 and A5.

## 11 RECALLS

If Rule 30.3 has been broken by one or more boats, a race committee boat near Mark 1 will, if possible, display the Black Flag and display the sail numbers of the boats concerned and, if possible, make repetitive sound signals.

## **12 CHANGE OF THE NEXT LEG OF THE COURSE**

- 12.1 To change the next leg of the course, the race committee will move the original mark (or the finishing line) to a new position.
- 12.2 Boats shall pass between the race committee boat signalling the change of the next leg and the nearby mark, leaving the mark to port and the race committee boat to starboard. This changes rule 28.1.

## **13 THE FINISH**

The finishing line will be between a staff displaying a Blue Flag on a race committee boat (Starboard-end) and a dan boy with a blue flag (Port-end).

## **14 SPARE**

## **15 TIME LIMITS AND TARGET TIMES**

- 15.1 Time limits and target times are as follows:

<u>Time Limit</u>	<u>Target Time</u>
90 min.	60 min.

Failure to meet the target time will not be grounds for redress. This changes rule 62.1(a).

- 15.2 Boats failing to finish within 15 minutes after the first boat sails the course and finishes will be scored Did Not Finish without a hearing. This changes rules 35, A4 and A5.

## **16 PROTESTS AND REQUESTS FOR REDRESS**

- 16.1 Protest forms are available at the race office, located at the ISC Medemblik. Protests and requests for redress or reopening shall be delivered there within the appropriate time limit.
- 16.2 The protest time limit is 90 minutes after the last boat has finished the last race of the day or after instruction 15.2 has been applied to that race or after that race has been abandoned or postponed to another day.
- 16.3 Notices will be posted no later than 30 minutes after the protest time limit to inform competitors of hearings in which they are parties or named as witnesses. Hearings will be held in the protest room, located at the ISC Medemblik, beginning as soon as possible.
- 16.4 Notices of protests by the race committee or protest committee will be posted to inform boats under rule 61.1(b).
- 16.5 Breaches of instructions 10.4, 18, 21, 22, 23, 24, 25, and 26 will not be grounds for a protest by a boat. This changes rule 60.1(a). Penalties for these breaches may be less than disqualification if the protest committee so decides. The scoring abbreviation for a discretionary penalty imposed under this instruction will be DPI.
- 16.6 On the last scheduled day of racing a request for reopening a hearing shall be delivered
- (a) within the protest time limit if the requesting party was informed of the decision on the previous day;
  - (b) no later than 30 minutes after the requesting party was informed of the decision on that day.

This changes rule 66.

- 16.7 On the last scheduled day of racing a request for redress based on a protest committee decision shall be delivered no later than 30 minutes after the decision was posted. This changes rule 62.2.

## **17 SCORING**

- 17.1 Three races are required to be completed to constitute a series.
- 17.2 (a) When fewer than 5 races have been completed, a boat's series score will be the total of her race scores.
- (b) When 5 or more races have been completed, a boat's series score will be the total of her race scores excluding her worst score.

## **18 SAFETY REGULATIONS**

- 18.1 Each race, before starting, each boat shall pass between the starboard side of the race committee signal boat and a dan buoy with a Green Flag and have her sail number orally acknowledged by the race committee.
- 18.2 A boat that retires from a race shall notify the race committee as soon as possible.
- 18.3 Boats not leaving the harbor for a day's race shall inform the Regatta Office prior to the start.
- 18.4 If any one of the race signals AP over A, or AP over H, or N over H, or N over A is made on a race committee boat, all boats shall return to the harbor immediately.
- 18.5 While afloat it is strongly recommended to wear adequate personal buoyancy under all circumstances.

## **19 REPLACEMENT OF CREW OR EQUIPMENT**

- 19.1 Substitution of competitors will not be allowed without prior written approval of the race committee.
- 19.2 Substitution of damaged or lost equipment will not be allowed unless authorized by the race committee. Requests for substitution shall be made to the committee at the first reasonable opportunity.

## **20 EQUIPMENT AND MEASUREMENT CHECKS**

A boat or equipment may be inspected at any time for compliance with the class rules and sailing instructions. On the water, a boat can be instructed by a race committee equipment inspector or measurer to proceed immediately to a designated area for inspection.

## **21 OFFICIAL BOATS**

Official boats will be marked as follows:

- a) Race committee boats will fly a white flag with 'RC'.
- b) Orange rigid inflatable boats of the OA are marked 'Rescue' on both sides of the hull and carry a blue outboard cover with the club insignia.
- c) Jury boats will fly a yellow flag with 'Jury' or 'IJ'.

## **22 SUPPORT BOATS**

- 22.1 Except in case of emergency, team leaders, coaches and other support personnel shall stay outside areas where boats are racing and shall not communicate with boats from the time of the preparatory signal for the first class to start until all boats have finished or retired or the race committee signals a postponement, general recall or abandonment.
- 22.2 Support boats shall be marked with The National Flag of the country they represent.

## **23 TRASH DISPOSAL**

Boats shall not put trash in the water. Trash may be placed aboard support and race committee boats.

## **24 HAUL-OUT RESTRICTIONS**

Boats shall not be hauled out during the regatta except with and according to the terms of prior written permission of the race committee.

**25 DIVING EQUIPMENT AND PLASTIC POOLS**

Underwater breathing apparatus and plastic pools or their equivalent shall not be used around keelboats between the preparatory signal of the first race and the end of the regatta.

**26 RADIO COMMUNICATION**

Except in an emergency, a boat shall neither make radio transmissions while racing nor receive radio communications not available to all boats. This restriction also applies to mobile telephones.

**27 PRIZES**

27.1 Prizes will be given as follows: A series prize for every six boats entered in time.

27.2 The following perpetual prizes will be awarded:

- Medemblik Trophy, a perpetual trophy for the helmsman of the first boat in the series
- Hollandia Uhr, perpetual trophy
- Sonderpreis, perpetual trophy for the crew who had to make the longest trip to come to Medemblik ( the place where the helmsman lives)

**28 DISCLAIMER OF LIABILITY**

Competitors participate in the regatta entirely at their own risk. See rule 4, Decision to Race. The organizing authority will not accept any liability for material damage or personal injury or death sustained in conjunction with or prior to, during, or after the regatta.

**39 INSURANCE**

Each participating boat shall be insured with valid third-party liability insurance with a minimum cover of € 1,500,000 per event or the equivalent.

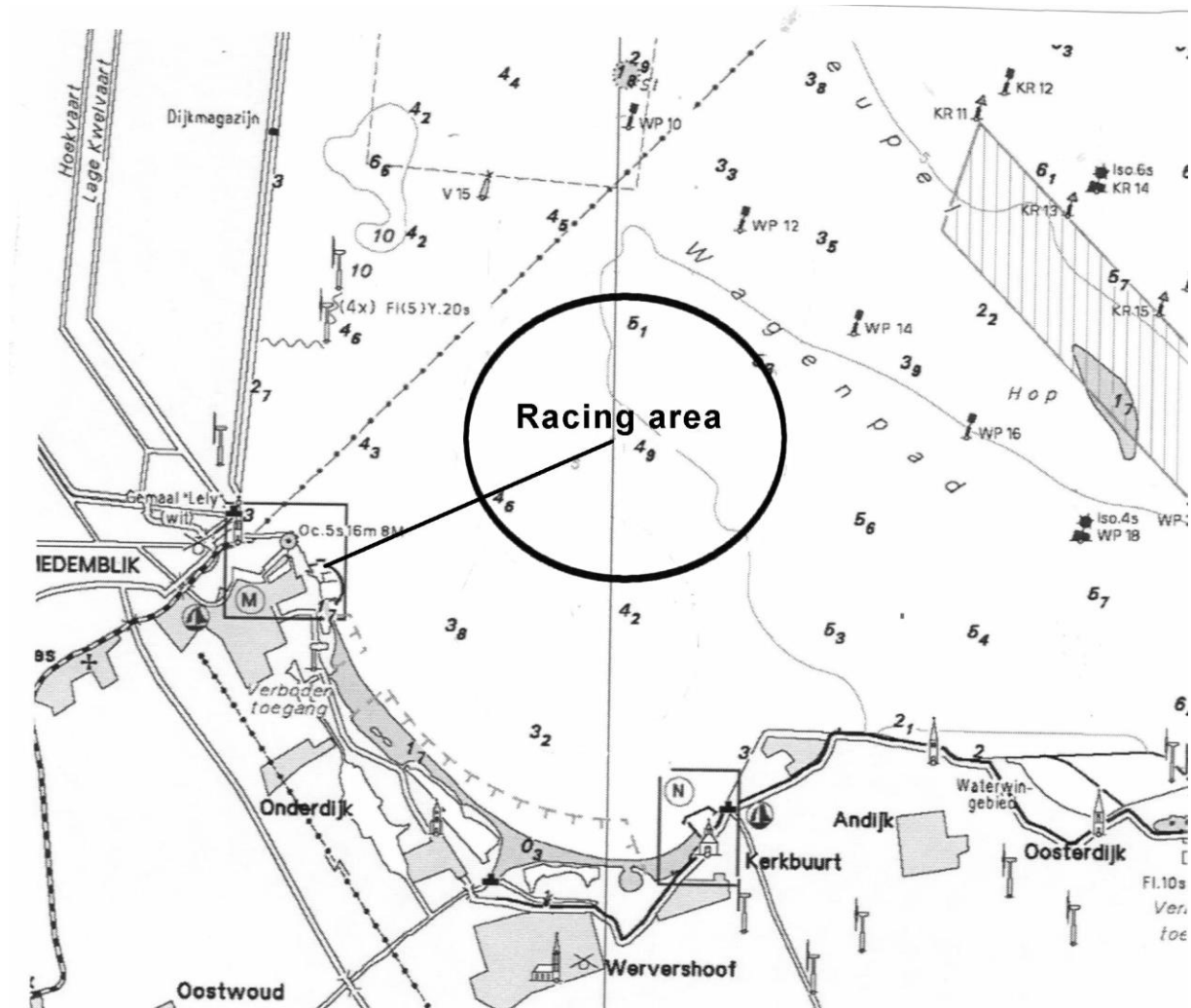
# ATTACHMENT A

## APPROXIMATE POSITION RACING AREA

Harbor (Regatta Center) – Racing Area (midpoint)

distance: approx. 1,8 NM

compass bearing: approx. 70°



## ATTACHMENT B

### MARKS:

Port-end starting mark:

a dan buoy with an orange flag

Starboard-end starting mark:

the RC Signal boat

Marks 1, 2 and 3:

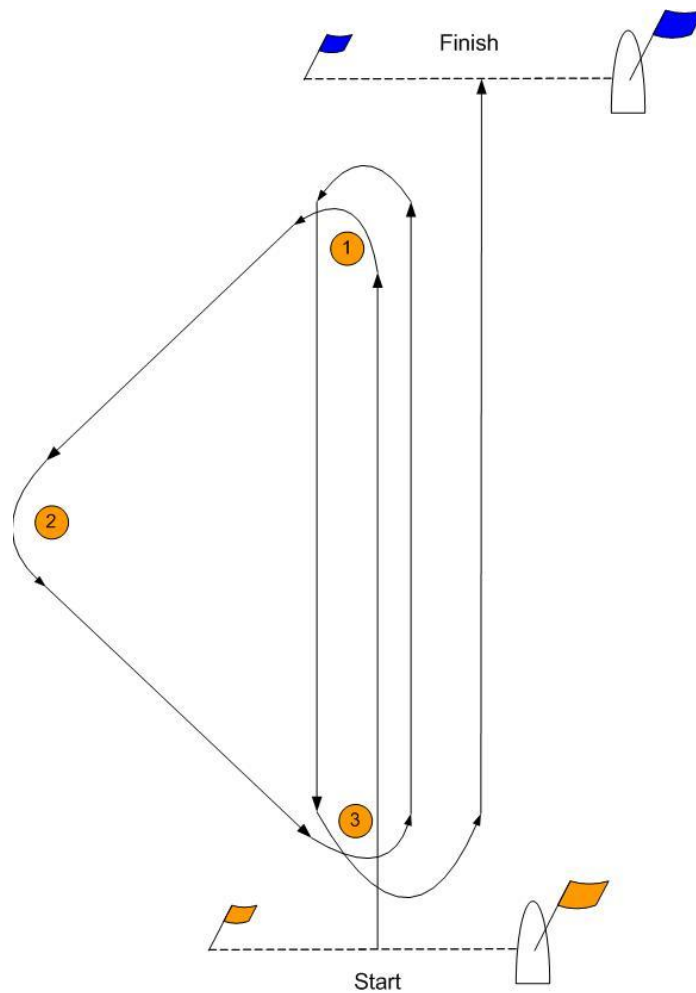
orange inflatable cubical shapes

**Please note: Marks are not numbered**

Starboard-end finishing mark: the RC boat

Port -end finishing mark

a dan buoy with a blue flag



**Start-1-2-3-1-3-finish**