



## **RYC Hollandia**

### **Spring Regatta 2015 Class event Contender, Randmeer and A-Cat 2015 Open Dutch Championship Flying Dutchman**

#### **SAILING INSTRUCTIONS**

The class event will be held from 6 and 7 June. The Open Dutch Championship Flying Dutchman will be held from 5-7 June inclusive. This combined event will be sailed on the IJsselmeer off Medemblik, the Netherlands.

The Organizing Authority is the Royal Yacht Club Hollandia in conjunction with the Royal Netherlands Watersport Association (RNWA).

#### **1 RULES**

- 1.1 The regatta will be governed by the rules as defined in *The Racing Rules of Sailing*.
- 1.2 The prescriptions of the RNWA will apply .
- 1.3 The '*Rules for Championships Sailing, Windsurfing and Kiteboarding*' of the RNWA will apply for the Open Dutch Championship Flying Dutchman.
- 1.4 For the Contender class only: Appendix P will apply.
- 1.5 Every person on board who is domiciled in the Netherlands shall have the required license. The licenses will be checked at registration.
- 1.6 If there is a conflict between languages the English text will take precedence.

#### **2 NOTICES TO COMPETITORS**

Notices to competitors will be posted on the official notice board(s) outside and near the entry of the regatta office.

### 3 CHANGES TO SAILING INSTRUCTIONS

Any change to the sailing instructions will be posted before 09:00 hours on the day it will take effect, except that any change to the schedule of races will be posted by 20:00 hours on the day before it will take effect.

### 4 SIGNALS MADE ASHORE

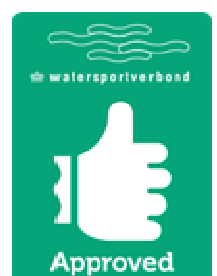
- 4.1 Signals made ashore will be displayed at the signalling mast near the regatta office. See SI 3.
- 4.2 When flag AP is displayed ashore, '1 minute' is replaced with 'not less than 60 minutes' in the race signal AP.
- 4.3 When flag Y is displayed ashore, rule 40 applies at all times while afloat. This changes the Part 4 preamble. Neither a wet suit nor a dry suit constitute adequate personal buoyancy.

### 5 FORMAT AND SCHEDULE OF RACES

- 5.1 Nine races are scheduled for the Open Dutch Championship Flying Dutchman. No more than three races will be sailed per day.
- 5.2 Six races are scheduled for the class event for the Contender, Randmeer and A-Cat classes. No more than three races will be sailed per day.
- 5.3 Racing and events are scheduled as follows:

Day/Date	Time	Race/event Flying Dutchman
Friday 5 June	830 - 1130 1200 a.s.a.p. a.s.a.p. t.b.a.	Registration open Warning signal race 1 Warning signal race 2 Warning signal race 3 Dinner at Brakeboer
Saturday 6 June	1030 a.s.a.p. a.s.a.p. t.b.a.	Warning signal race 4 Warning signal race 5 Warning signal race 6 BBQ at the venue of the event
Sunday 7 June	1030 a.s.a.p. a.s.a.p. After the last race	Warning signal race 7 Warning signal race 8 Warning signal race 9 Prize giving

a.s.a.p. = races will start as soon as practicable at the discretion of the RC.  
No warning signal will be made after 1430 on Sunday 7 June.



Day/Date	Time	Race/event Contender, Randmeer and A-Cat
Saturday 6 June	830 -1130 1200* a.s.a.p. a.s.a.p. t.b.a.	Registration open Warning signal race 1 Warning signal race 2 Warning signal race 3 Happy Hour in Café Brakeboer
Sunday 7 June	1040 a.s.a.p. a.s.a.p. After the last race	Warning signal race 4 Warning signal race 5 Warning signal race 6 Prize giving
<p>* Depending on the start of the FD class a.s.a.p. = races will start as soon as practicable at the discretion of the RC. No warning signal will be made after 1430 on Sunday 7 June.</p>		

- 5.4 To alert boats that a race will begin soon, the orange starting line flag on the starboard end will be displayed with one sound at least five minutes before a warning signal is made.

## 6 CLASS FLAG

The Class flags will be:

Class	Flag
Flying Dutchman	Code flag F
Contender	Code flag G
Randmeer	Code flag J
A-Cat	Code flag K

## 7 RACING AREAS

Attachment A shows the location of racing areas. The Starting Area is defined as a rectangle covering the area 100 meters to both windward and leeward of the starting line and 100 meters to both port and starboard of either end of the starting line.

## 8 THE COURSE

- 8.1 The diagrams in Attachment B shows the course, including the approximate angles between legs, the order in which marks are to be passed, and the side on which each mark is to be left.
- 8.2 No later than the warning signal, the race committee signal boat will display the approximate compass bearing of the first leg.

## 9 MARKS

- 9.1 Marks are described in Attachment B.
- 9.2 A race committee boat signalling a change of a leg of the course is a mark as provided in instruction 12.2.

## 10 THE START

- 10.1 Races will be started by using rule 26 with the warning signal made 5 minutes before the starting signal.

- 10.2 The starting line will be between a staff displaying an orange flag on the race committee signal boat at the starboard end and a dan buoy with an orange flag at the port end.
- 10.3 A line boat may be positioned near the port end of the starting line. If possible the line boat will repeat the following visual signals of the race committee signal boat: Flags X, and 1st Substitute.
- 10.4 Boats whose warning signal has not been made shall avoid the Starting Area during the starting sequence of other races.
- 10.5 If flag U has been displayed as the preparatory signal, no part of a boat's hull, crew or equipment shall be in the triangle formed by the ends of the starting line and the first mark during the last minute before her starting signal. If a boat breaks this rule and is identified, she shall be disqualified without a hearing but not if the race is restarted or resailed or postponed or abandoned before the starting signal. This changes rules 26 and 63.1. When flag U is used as the preparatory signal, rule 29.1 does not apply. The scoring abbreviation of a flag U penalty is UFD. This changes rule A11.
- 10.6 A boat starting later than 4 minutes after her starting signal will be scored Did Not Start without a hearing. This changes rule A4.

## 11 RECALLS

If rule 30.3 has been broken by one or more boats, a race committee boat near mark 1 will, if possible, display the sail numbers of the boats concerned and, if possible, make repetitive sound signals. Failure to display the sail numbers or failure to make repetitive sound signals will not be grounds for redress. This changes rule 62.1(a).

## 12 CHANGE OF THE NEXT LEG OF THE COURSE

- 12.1 To change the next leg of the course, the race committee will move the original mark (or the finishing line) to a new position.
- 12.2 Except at a gate, boats shall pass between the race committee boat signalling the change of the next leg and the nearby mark, leaving the mark to port and the race committee boat to starboard. This changes rule 28.

## 13 THE FINISH

- 13.1 The finishing line will be between a staff displaying a blue flag on a race committee boat at the starboard end and a dan buoy with a blue flag at the port end.
- 13.2 For the A-Cat class only, the finishing line will be between a staff displaying a blue flag on a race committee boat at the port end and a dan buoy with a blue flag at the starboard end.

## 14 PENALTY SYSTEM

- 14.1 For the A-Cat class only, rule 44.1 is changed so that the Two-Turn Penalty is replaced by the One-Turn Penalty.
- 14.2 For the Contender class only, rule 42 is changed as follows, per International Contender Association Class Rule 22 and Appendix P5:
  - a) When the wind speed exceeds 10 knots across the course, the race committee may signal that except on a beat to windward, pumping, rocking and ooching are permitted, as specified in the class rules, by displaying flag O before or with the warning signal.
  - b) If the wind speed exceeds 10 knots after the starting signal, the race committee may display flag O with repetitive sounds at a rounding mark



to signal that the actions are permitted, as specified in the class rules. This applies to a boat after she has passed the mark.

- c) If the wind speed becomes less than 10 knots across the course after flag O was displayed, the race committee may display flag R with repetitive sounds at a rounding mark to signal that rule 42, as changed by the class rules, applies to a boat after she has passed the mark.

## **15 TIME LIMITS AND TARGET TIMES**

- 15.1 If no boat has passed Mark 1 within 30 minutes after her starting signal, the race may be abandoned.
- 15.2 The target time for a race will be 60 minutes. For A-Cat class only: the target time for a race will be 45 minutes. Failure to meet the target time will not be grounds for redress. This changes rule 62.1(a).
- 15.3 Boats failing to finish within 15 minutes after the first boat sails the course and finishes will be scored Did Not Finish (DNF) without a hearing. This changes rules 35, A4 and A5.
- 15.4 The time limit for each race will be 90 minutes.
- 15.5 A race that has been abandoned may be re sailed at the discretion of the race committee. Races will be numbered in the order in which they are completed.

## **16 PROTESTS AND REQUESTS FOR REDRESS**

- 16.1 Protest forms are available at the regatta office. Protests and requests for redress or reopening shall be delivered there within the appropriate time limit.
- 16.2 For each fleet, the protest time limit is 90 minutes after the last boat has finished the last race of the day or after instruction 15.3 has been applied to that race or the race committee signals no more racing today, whichever is later.
- 16.3 Notices will be posted no later than 30 minutes after the protest time limit to inform competitors of hearings in which they are parties or named as witnesses. Hearings will be held in the protest room, located at the regatta office, beginning at the time posted.
- 16.4 Notices of protests by the race committee or protest committee will be posted to inform boats under rule 61.1(b).
- 16.5 A list of boats that, under instruction 14, have been penalized for breaking rule 42, will be posted.
- 16.6 Breaches of instructions 10.4, 18, 21, 23, 24, 25, 26 and 27 will not be grounds for a protest by a boat. This changes rule 60.1(a). Penalties for these breaches may be less than disqualification if the protest committee so decides. The scoring abbreviation for a discretionary penalty under this SI will be DPI.
- 16.7 On the last scheduled day of racing a request for reopening a hearing shall be delivered
- (a) within the protest time limit if the requesting party was informed of the decision on the previous day;
  - (b) no later than 30 minutes after the requesting party was informed of the decision on that day.

This changes rule 66.

- 16.8 On the last scheduled day of racing a request for redress based on a protest committee decision shall be delivered no later than 30 minutes after the decision was posted. This changes rule 62.2.



## **17 SCORING**

- 17.1 Four races are required to be completed to constitute a series.
- 17.2 (a) When fewer than five (5) races have been completed, a boat's series score will be the total of her race scores.
- (b) When five, six seven or eight (5-8) races have been completed, a boat's series score will be the total of her race scores excluding her worst score.
- (c) When nine races have been completed, a boat's series score will be the total of her race scores excluding her two worst scores.

## **18 SAFETY REGULATIONS**

- 18.1 Each racing day, before the warning signal of the first race of that day, a boat shall pass in windward direction between the starboard side of the race committee signal boat and a dan buoy with a green flag and have her sail number orally acknowledged by the race committee.
- 18.2 A boat that retires from a race shall inform the race committee as soon as possible and before leaving the race area, and shall notify the race office at once on coming ashore.
- 18.3 Boats not leaving the harbor for a day's race shall inform the regatta office prior to the start.
- 18.4 If any one of the race signals AP over A, AP over H, N over H, or N over A is made on a race committee boat, all boats shall return to the harbor immediately.
- 18.5 While afloat it is strongly recommended to wear adequate personal buoyancy under all circumstances.

## **19 REPLACEMENT OF CREW OR EQUIPMENT**

- 19.1 Substitution of competitors will not be allowed without prior written approval of the race committee.
- 19.2 Substitution of damaged or lost equipment will not be allowed unless authorized by the race committee. Requests for substitution shall be made in writing to the committee at the first reasonable opportunity.

## **20 SPARE**

-

## **21 EQUIPMENT AND MEASUREMENT CHECKS**

A boat or equipment may be inspected at any time for compliance with the class rules and sailing instructions. On the water, a boat can be instructed by an equipment inspector or measurer for the event to proceed immediately to a designated area for inspection

## **22 OFFICIAL BOATS**

Official boats will be marked as follows:

- a) Race committee signal boats will fly a flag with 'RC' on a white background.
- b) Orange rigid inflatable boats of the race committee are marked 'Rescue' on both sides of the hull and carry a blue outboard cover with the club insignia.
- c) Jury boats will fly a flag with 'Jury' on a yellow or white background.



## **23 SUPPORT BOATS**

- 23.1 All support boats shall be registered with the OA before launching.
- 23.2 Except in case of emergency, team leaders, coaches and other support personnel shall stay at least 50 meters outside areas where boats are racing and shall not communicate with boats from the time of the preparatory signal until all boats have finished or retired or the race committee signals a postponement, general recall or abandonment.
- 23.3 Support boats shall be marked with the national flag of the country they represent.
- 23.4 Support boats should be prepared to offer assistance to competing boats in the event of adverse weather if requested to do so by the race committee.

## **24 TRASH DISPOSAL**

Trash may be placed aboard support and race committee boats. A penalty of breaking rule 55 may be less than qualification if the protest committee so decides.

## **25 HAUL-OUT RESTRICTIONS**

Keelboats shall not be hauled out during the regatta except with and according to the terms of prior written permission of the race committee.

## **26 DIVING EQUIPMENT AND PLASTIC POOLS**

Underwater breathing apparatus and plastic pools or their equivalent shall not be used around keelboats between the preparatory signal of the first race and the end of the regatta.

## **27 RADIO COMMUNICATION**

Except in an emergency, a boat shall neither make radio transmissions while racing nor receive radio communications not available to all boats. This restriction also applies to mobile telephones.

## **28 PRIZES**

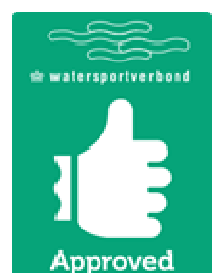
Prizes will be awarded as described in the notice of race (NOR 16).

## **29 DISCLAIMER OF LIABILITY**

Competitors participate in the regatta entirely at their own risk. See rule 4, Decision to Race. The organizing authority will not accept any liability for material damage or personal injury or death sustained in conjunction with or prior to, during, or after the regatta.

## **30 INSURANCE**

Each participating boat shall be insured with valid third-party liability insurance with a minimum cover of € 1.500.000 per incident or the equivalent.





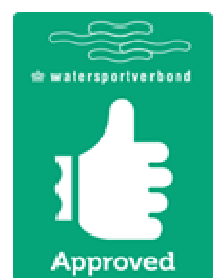
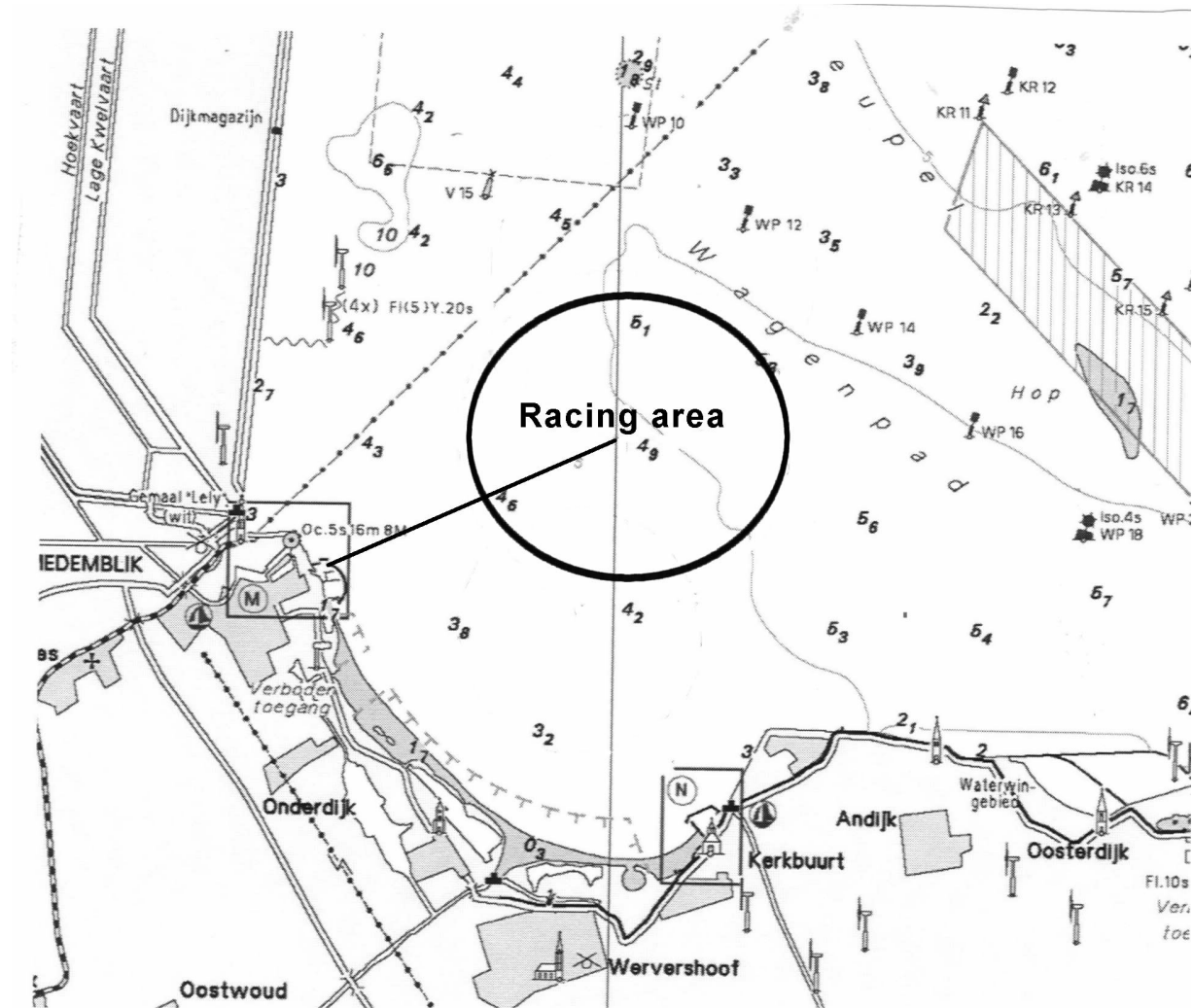
# ATTACHMENT A

## APPROXIMATE POSITION RACING AREA

Harbor (Regatta Center) – Racing Area (midpoint)

distance: approx. 1,8 NM

compass bearing: approx. 70°





## ATTACHMENT B (FD, Contender and Randmeer class)

### MARKS:

Port-end starting mark:

RC boat displaying an orange flag

Starboard-end starting mark:

Dan buoy with an orange flag

Marks 1, 2 and 3:

Orange cubical inflatable shapes

Mark A:

Orange cylindrical inflatable shape

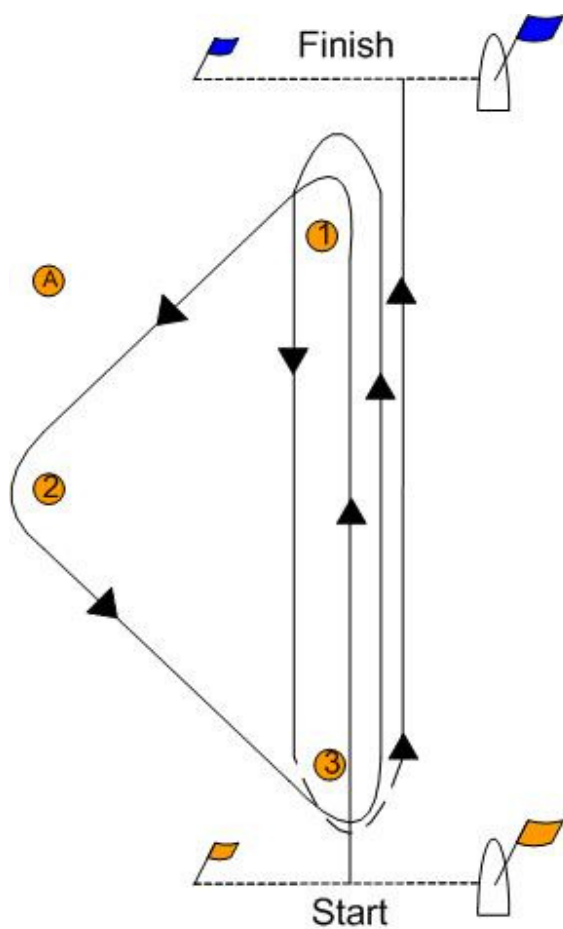
### Please note: Marks are not numbered

Starboard-end finishing mark:

RC boat displaying a blue flag

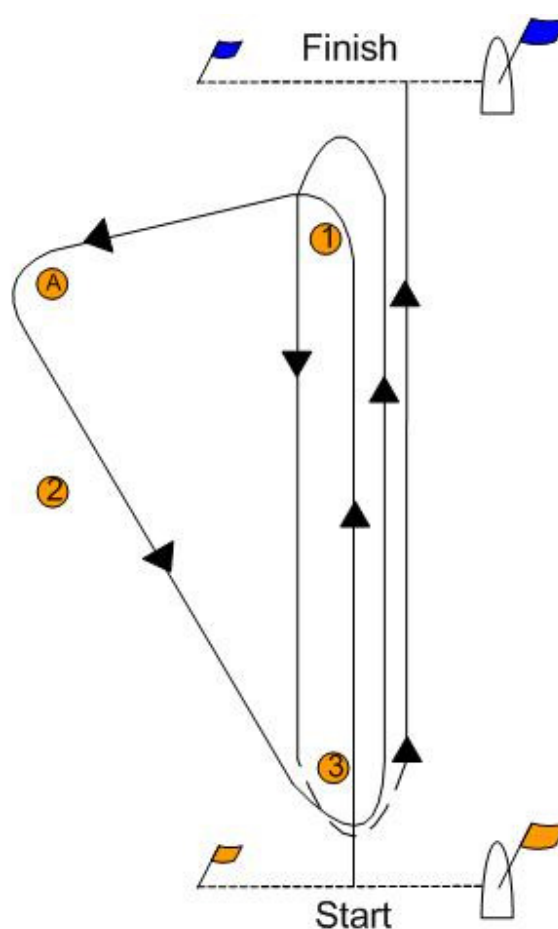
Port-end finishing mark:

Dan buoy with a blue flag



**FD:** start-1-2-3-1-3-1-2-3-finish

**Randmeer:** start-1-2-3-1-3-finish



**Contender:** start-1-A-3-1-3-finish



## ATTACHMENT B (A-Cat class)

### MARKS:

Port-end starting mark:

RC boat displaying an orange flag

Starboard-end starting mark:

Dan buoy with an orange flag

Mark 4:

Orange cubical inflatable shape

Marks 5p/5sb

Green cylindrical shapes

### Please note: Marks are not numbered

Starboard-end finishing mark

Dan buoy with a blue flag

Port-end finishing mark:

RC boat displaying a blue flag

*Course diagram will be provided*

**A-Cat:** start-4-5p/5sb-4-5p/5sb-4-5p/5sb-finish

