



FLYING FIFTEEN

European Open Championship 2016

28th August – 2nd September 2016

Medemblik, the Netherlands

SAILING INSTRUCTIONS

Venue

IJsselmeer off Medemblik, the Netherlands

Organizing Authority

Flying Fifteen International in conjunction with **Royal Yachtclub Hollandia**

Abbreviations:

- [NP] A breach of this rule will not be grounds for protest by a boat.
[DP] Rules for which the penalties are at the discretion of the protest committee.

1 RULES

- 1.1 The regatta will be governed by the 'rules' as defined in *The Racing Rules of Sailing*.
1.2 The Prescriptions of the Dutch National Authority will apply
(<http://www.sailing.org/tools/documents/RRSPrescriptions20132016Netherlands-171651.pdf>)
1.3 If there is a conflict between languages, the English text will take precedence.

2 NOTICES TO COMPETITORS

Notices to competitors will be posted on the official notice board(s) located near the entrance of the regatta office.

3 CHANGES TO SAILING INSTRUCTIONS

Any change to the sailing instructions will be posted before 0900 on the day it will take effect, except that any change to the schedule of races will be posted by 2000 on the day before it will take effect.

4 SIGNALS MADE ASHORE

4.1 Signals made ashore will be displayed from the main flagpole of the Regatta Center Medemblik near the regatta office.

4.2 When flag AP is displayed ashore, '1 minute' is replaced with 'not less than 60 minutes' in the race signal AP.

5 SCHEDULE OF RACES AND EVENTS

5.1 Schedule of racing and events:

Sunday	28/08	09:00 / 18:00 18:00	Measurement and Registration Opening reception
Monday	29/08	08:30 / 11:30 13:00 a.s.a.p.	Measurement and Registration Warning signal Race 1 Warning signal Race 2 ██████████
Tuesday	30/08	12:00 a.s.a.p.	Warning signal Race 3 Warning signal Race 4 ██████████
Wednesday	31/08	12:00 a.s.a.p.	Warning signal Race 5 Warning signal Race 6 ██████████
Thursday	01/09	12:00 a.s.a.p.	Warning signal Race 7 Warning signal Race 8 ██████████
Friday	02/09	12:00 a.s.a.p. a.s.a.p.	Warning signal Race 9 Warning signal Race 10 Prize giving

5.2 To alert boats that a race will begin soon, an orange flag will be displayed with one sound at least five minutes before a warning signal is made.

5.3 Ten (10) races are scheduled, two per day. One extra race per day may be sailed, provided that the event becomes not ahead of schedule.

5.4 On the last day of the regatta no warning signal will be made after 15.00 hrs.

6 CLASS FLAG

The Class flag will be Code flag Q (yellow flag).

7 RACING AREA

Attachment A shows the location of racing area. The Starting Area is defined as a rectangle covering the area 100 meters to both windward and leeward of the Starting Line and 100 meters to both port and starboard of either end of the Starting Line.

8 THE COURSES

- 8.1 The diagrams in Attachment B show the courses, including the approximate angles between legs, the order in which marks are to be passed, and the side on which each mark is to be left.
- 8.2 No later than the warning signal, the race committee signal boat will display the approximate compass bearing of the first leg.

9 MARKS

- 9.1 Marks to be used are described in Attachment B.
- 9.2 A race committee boat signalling a change of a leg of the course is a mark as provided in instruction 12.2.

10 THE START

- 10.1 Races will be started by using rule 26 with the warning signal made five (5) minutes before the starting signal.
- 10.2 The starting line will be between a staff displaying an orange flag on the race committee signal boat at the starboard end and a dan buoy with an orange flag at the port end.
- 10.3 A line boat may be positioned near the port end of the starting line. If possible the line boat will repeat the 1st Substitute signal of the starting vessel.
- 10.4 If flag U has been displayed as the preparatory signal, no part of a boat's hull, crew or equipment shall be in the triangle formed by the ends of the starting line and the first mark during the last minute before her starting signal. If a boat breaks this rule and is identified, she shall be disqualified without a hearing but not if the race is restarted or re-sailed or postponed or abandoned before the starting signal. This changes rule 26 *Starting Races*, A5 and 63.1. When flag U is used as the preparatory signal rule 29.1 Individual recall does not apply. The scoring abbreviation for a flag U penalty is UFD. This changes A11 *Scoring Abbreviations*.
- 10.5 A boat starting later than four (4) minutes after her starting signal will be scored Did Not Start without a hearing. This changes rules A4 and A5.

11 SPARE

12 CHANGE OF THE NEXT LEG OF THE COURSE

- 12.1 To change the next leg of the course, the race committee will move the original mark (or the finishing line) to a new position, or lay a new mark and remove the original mark as soon as practicable.
- 12.2 Except at a gate, boats shall pass between the race committee boat signalling the change of the next leg and the nearby mark, leaving the mark to port and the race committee boat to starboard. This changes rule 28.1.

13 THE FINISH

The finishing line will be between a staff displaying a Blue Flag on a race committee boat (Starboard end) and a dan buoy with a blue flag (Port-end).

14 SPARE

15 TIME LIMITS AND TARGET TIMES

- 15.1 Time limits and target times are as follows:

<u>Time Limit</u>	<u>Target Time</u>
110 min.	70 min.

Failure to meet the target time will not be grounds for redress. This changes rule 62.1(a).

- 15.2 Boats failing to finish within thirty (30) minutes after the first boat sails the course and finishes will be scored Did Not Finish, without a hearing. This changes rules 35, A4 and A5.
- 15.3 In case of three scheduled races (see SI 5.3) the target time will be 45 minutes; the time limit will then be ninety (90) minutes and the finish window as mentioned in SI 15.2 will then be twenty (20) minutes.

16 PROTESTS AND REQUESTS FOR REDRESS

- 16.1 Protest forms are available at the regatta office, located at the ISC Medemblik. Protests and requests for redress or reopening shall be delivered there within the appropriate time limit.
- 16.2 For each class, the protest time limit is 90 minutes after the last boat has finished the last race of the day or after instruction 15.2 or 15.2 has been applied to that race, or the race committee signals no more racing today, whichever is later.
- 16.3 Notices will be posted no later than 30 minutes after the protest time limit to inform competitors of hearings in which they are parties or named as witnesses. Hearings will be held in the protest room, located at the ISCM, beginning as soon as possible.
- 16.4 Notices of protests or requests for redress by the race committee or protest committee will be posted to inform boats under rule 61.1(b).
- 16.5 Spare.

- 16.6 Breaches of instructions 10.4, 18, 22, 23, 24 and 28 will not be grounds for a protest by a boat. This changes rule 60.1(a). Penalties for these breaches may be less than disqualification if the protest committee so decides.
- 16.7 Penalties for breaches of SI marked [DP] are at the discretion of the protest committee, but the World Sailing approved guidance will be followed. The same applies for infringement of rules other than those in RRS Part 2.
- 16.8 A boat may accept a discretionary penalty for the breach of a rule subject to [DP] by acknowledging the breach before a hearing.
- 16.9 On the last scheduled day of racing a request for reopening a hearing shall be delivered
- (a) within the protest time limit if the requesting party was informed of the decision on the previous day;
 - (b) no later than 30 minutes after the requesting party was informed of the decision on that day.
- This changes rule 66.
- 16.10 On the last scheduled day of racing a request for redress based on a protest committee decision shall be delivered no later than 30 minutes after the decision has been posted. This changes rule 62.2.

17 SCORING

- 17.1 One race is required to be completed to constitute a series.
- 17.2
- (a) When fewer than five races have been completed, a boat's series score will be the total of her race scores.
 - (b) When from five (5) to eight (8) races have been completed, a boat's series score will be the total of her race scores excluding her worst score.
 - (b) When nine (9) or more races have been completed, a boat's series score will be the total of her race scores excluding her two worst scores.

18 SAFETY REGULATIONS [NP] [DP]

- 18.1 Each race day, each crew member must sign the attendance sheet before departure and again after return at the end of races or after he/she has retired. This sheet will be available in the regatta office two (2) hours before the scheduled warning signal of the first race of the day until the preparatory signal for that race. After racing the sheet will be available until the end of the protest time limit.
- 18.2 A boat that retires from a race shall notify the race committee as soon as possible.
- 18.3 Boats not leaving the harbor for a day's race shall inform the regatta office prior to the start.
- 18.4 If any one of the race signals AP over A, AP over H, N over H or N over A is made on a race committee boat, all boats of the class(es) concerned shall return to the harbor immediately.
- 18.5 Competitors shall wear personal flotation devices at all times while afloat, except briefly while changing or adjusting clothing or personal equipment.

18.6 A breach of SI 18.1 will result in a three (3) points penalty without a hearing for the closest race to the breach. This changes rule A5.

19 REPLACEMENT OF COMPETITORS OR EQUIPMENT [DP]

19.1 Substitution of competitors will not be allowed without prior written approval of the race committee and any substitution thus granted shall not helm the boat.

19.2 Substitution of damaged or lost equipment will not be allowed unless authorized by the race committee. Requests for substitution shall be made to the committee at the first reasonable opportunity.

20 EQUIPMENT AND MEASUREMENT CHECKS [DP]

20.1 A boat or equipment may be inspected at any time for compliance with the class rules and sailing instructions.

20.2 On the water, a boat can be instructed by a race committee equipment inspector or measurer for the event to proceed immediately to a designated area for inspection.

21 OFFICIAL BOATS

Official boats will be marked as follows:

- a) Race committee boats will fly a white flag with 'RC'.
- b) Orange rigid inflatable boats of the OA are marked 'Rescue' on both sides of the hull and carry a grey outboard cover with the club insignia.

22 SUPPORT BOATS [NP] [DP]

22.1 Except in case of emergency, team leaders, coaches and other support personnel shall stay outside areas where boats are racing and shall not communicate with boats from the time of the preparatory signal until all boats have finished or retired or the race committee signals a postponement, general recall or abandonment.

22.2 Support boats shall be marked with The National Flag of the country they represent.

23 TRASH DISPOSAL [NP] [DP]

Trash may be placed aboard support and race committee boats. A penalty for breaking rule 55 may be less than disqualification if the protest committee so decides. See SI 16.7

24 RADIO COMMUNICATION [NP] [DP]

Except in an emergency, a boat shall neither make radio transmissions while racing nor receive radio communications not available to all boats. This restriction also applies to mobile telephones. This changes Class Rule B 14.5.

25 PRIZES

- 25.1 The overall winner of the FFI European Championships will be awarded the Uffa Fox Memorial Trophy.
- 25.2 Medals will be awarded to the helm and crew of at least the first three (3) boats.
- 25.3 There may be additional prizes for Classic and Silver boats depending on entry numbers. The FFI identification rules for Classic and Silver boats will be used.

26 DISCLAIMER OF LIABILITY

Competitors participate in the regatta entirely at their own risk. See rule 4, Decision to Race. The organizing authority will not accept any liability for material damage or personal injury or death sustained in conjunction with or prior to, during, or after the regatta.

27 INSURANCE

Each participating boat shall be insured with valid third-party liability insurance with a minimum cover of € 1,500,000 per incident or the equivalent.

28 CODE OF CONDUCT [NP] [NP]

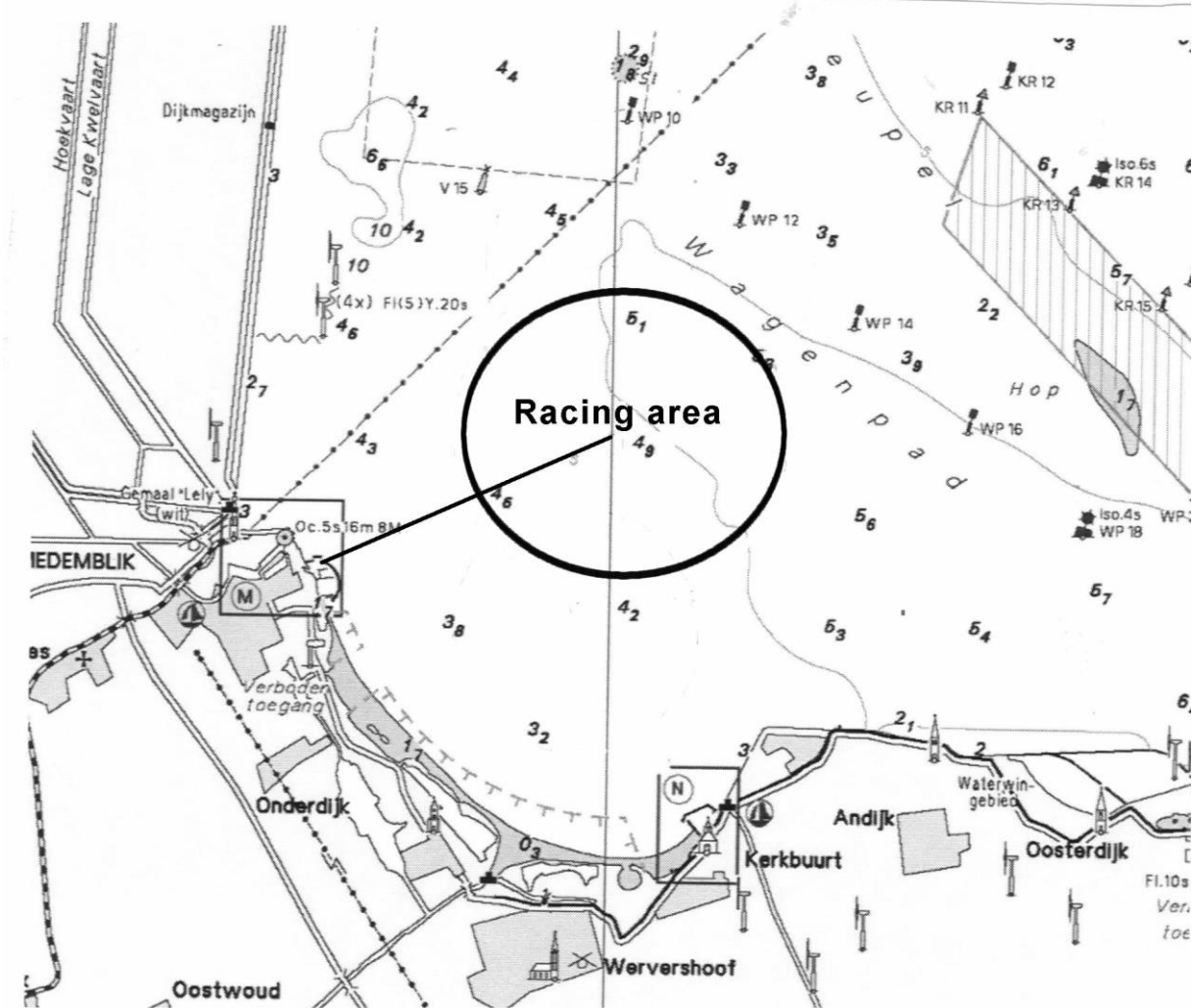
Competitors shall comply with any reasonable request from a regatta official.

APPROXIMATE POSITION RACING AREA

Harbor (Regatta Center) – Racing Area (midpoint)

distance: approx. 1,8 NM

compass bearing: approx. 70°

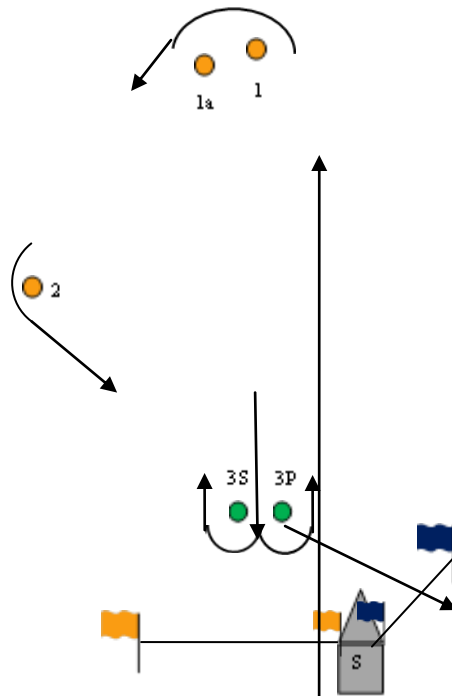


COURSES AND MARKS

MARKS:

Port-end starting mark:	a dan buoy with an orange flag
Starboard-end starting mark:	the RC signal boat displaying an orange flag
Port-end finishing mark:	a dan buoy with a blue flag
Starboard-end finishing mark:	the RC signal boat displaying a blue flag
Marks 1, 1A and 2:	orange inflatable cubical shapes
Marks 3p/3s	green inflatable cubical shapes

Please note: Marks are not numbered



Start – 1 - 1A - 3p/3s – 1 - 1A - 2 - 3p/3s – 1 – 1A – 3p - Finish