



**RYC Hollandia**

## **Test Event 2018**

**Musto Skiff**

**8 – 10 June 2018**

**Medemblik, the Netherlands**

### **SAILING INSTRUCTIONS**

The Test Event for the Musto Skiff class will be held on 8 - 10 June 2018. The event will be sailed on the IJsselmeer off Medemblik, the Netherlands.

The Organizing Authority (OA) is the Royal Yacht Club Hollandia.

Abbreviations:

[NP] A breach of this rule will not be grounds for protest by a boat.

.

#### **1 RULES**

- 1.1 The regatta will be governed by the rules as defined in *The Racing Rules of Sailing*.
- 1.2 The prescriptions of the Royal Netherlands Yachting Union (RNYU) will apply. See [http://www.sailing.org/documents/racingrules/national\\_prescriptions.php](http://www.sailing.org/documents/racingrules/national_prescriptions.php).
- 1.3 The following changes to the RRS will apply:
  - (a) Rules G1.3(c) & (d) shall not apply.
  - (b) Rule G1.3(a) is changed so that only one Class insignia on one side of the sail is required.
  - (c) Rule G1.3(a) is changed so that national letters and sail numbers are not required to be wholly above an arc whose centre is the head point and whose radius is 60% of the leech length.
  - (d) A **trapeze** system can be used, which is an amendment to rule 49.1
  - (e) Competitors shall wear personal flotation devices at all times while afloat, except briefly while changing or adjusting clothing or equipment. This changes RRS 40 and the preamble to Part 4.
- 1.4 Every person on board who has his domicile in the Netherlands shall be a member of a Yacht Club or other body affiliated to the RNYU and shall have the appropriate license.
- 1.5 If there is a conflict between languages the English text will take precedence.

## 2 NOTICES TO COMPETITORS

Notices to competitors will be posted on the official notice board(s) located near the race office.

## 3 CHANGES TO SAILING INSTRUCTIONS

Any change to the sailing instructions will be posted before 0800 on the day it will take effect, except that any change to the schedule of races will be posted by 2000 on the day before it will take effect.

## 4 SIGNALS MADE ASHORE

4.1 Signals made ashore will be displayed at the main flagpole of the Regatta Center Medemblik near the race office.

4.2 When flag AP is displayed ashore, '1 minute' is replaced with 'not less than 60 minutes' in the race signal AP.

## 5 SCHEDULE OF RACES AND EVENTS

5.1 Racing and events are scheduled as follows:

Day/Date	Time	Race/event
Friday 8 June	0900 -1200 1230 a.s.a.p. a.s.a.p.	Registration open Warning signal race 1 Warning signal race 2 Warning signal race 3
Saturday 9 June	1130 a.s.a.p. a.s.a.p. a.s.a.p	Warning signal race 4 Warning signal race 5 Warning signal race 6 Warning signal race 7*
Sunday 10 June	1130 a.s.a.p. a.s.a.p. After the last race	Warning signal race 7 or 8 Warning signal race 8 or 9 Warning signal race 9 or 10 Prize giving
* = one extra race may be sailed on Saturday. This will be announced at the finish of the third race of that day. a.s.a.p. = races will start as soon as practicable at the discretion of the RC. No warning signal will be made after 1430 on Sunday 10 June.		

5.2 To alert boats that a race will begin soon, the orange starting line flag on the race committee signal vessel will be displayed with one sound for at least five (5) minutes before a warning signal is made.

5.3 On the last day of the regatta no warning signal will be made after 14.30 hrs except after a general recall.

## 6 CLASS FLAG

Class flag will be Code flag E.

## 7 RACING AREA

Attachment A shows the location of the racing area.

## 8 THE COURSE

8.1 The diagram in Attachment B shows the course, including the approximate angles between legs, the order in which marks are to be passed, and the side on which each mark is to be left.

8.2 No later than the warning signal, the race committee signal vessel will display the approximate compass bearing of the first leg.

## **9 MARKS**

- 9.1 Marks to be used are described in Attachment B.
- 9.2 A race committee vessel signalling a change of a leg of the course is a mark as provided in instruction 12.2.

## **10 SPARE**

## **11 THE START**

- 11.1 Races will be started by using rule 26 with the warning signal made five (5) minutes before the starting signal.
- 11.2 The starting line will be between staffs displaying orange flags on the starting marks.
- 11.3 A race committee vessel may be positioned near the port end of the starting line. If possible this vessel will repeat the following Visual Signal of the race committee signal vessel: Flags 1st Substitute (general recall).
- 11.4 A boat that does not start within four (4) minutes after her starting signal will be scored Did Not Start without a hearing. This changes rule A4.1 and A5.

## **12 CHANGE OF THE NEXT LEG OF THE COURSE**

- 12.1 To change the next leg of the course, the race committee will move the original mark (or the finishing line) to a new position.
- 12.2 Boats shall pass between the race committee vessel signalling the change of the next leg and the nearby mark, leaving the mark to port and the race committee boat to starboard. This changes rule 28.1.
- 12.3 If the race committee vessel signalling the change of the next leg of the course displays C over Q (yellow) the subsequent mark to be passed will have a yellow colour.

## **13 THE FINISH**

The finishing line will be between staffs displaying blue flags on the downwind finishing marks

## **14 PENALTY SYSTEM**

- 14.1 RRS 44.1 is changed so that the Two-Turns Penalty is replaced by the One-Turn Penalty.
- 14.2 Appendix T(Arbitration) will apply.
- 14.3 No international Jury will be appointed

## **15 TIME LIMITS AND TARGET TIMES**

- 15.1 The course will be set to meet a target time of approximately 45 minutes for the first boat in each race to finish.  
The time limit will be 60 minutes.
- 15.2 Failure to meet the target time will not be grounds for redress. This changes rule 62.1(a).
- 15.3 Boats failing to finish within fifteen (15) minutes after the first boat sails the course and finishes will be scored Did Not Finish without a hearing. This changes rules 35, A4 and A5.

## **16 PROTESTS AND REQUESTS FOR REDRESS**

- 16.1 Protest forms are available at the race office, located at the Regatta Center Medemblik. Protests and requests for redress or reopening shall be delivered there within the appropriate time limit.
- 16.2 The protest time limit is 90 minutes after the last boat has finished the last race of the day or after instruction 15.3 has been applied to that race, or the race committee signals no more racing today, whichever is later.

- 16.3 Notices will be posted no later than 30 minutes after the protest time limit to inform competitors of hearings in which they are parties or named as witnesses. Hearings will be held in the protest room, located at the race office, beginning as soon as possible.
- 16.4 Notices of protests or requests for redress by the race committee, technical committee or protest committee will be posted to inform boats under rule 61.1(b).
- 16.5 Breaches of instructions marked with [NP] will not be grounds for protest by a boat. This changes rule 60.1(a). Penalties for these breaches may be less than disqualification if the protest committee so decides.
- 16.6 Penalties for breaches of instructions marked [DP] or class rules are at the discretion of the protest committee, but the World Sailing approved guidance will be followed.
- 16.7 A boat may accept a discretionary penalty for the breach of a rule subject to [DP] by acknowledging the breach before a hearing.
- 16.8 On the last scheduled day of racing a request for redress based on a protest committee decision shall be delivered no later than 30 minutes after the decision was posted. This changes rule 62.2.

## **17 SCORING**

- 17.1 Three (3) races are required to be completed to constitute a series..
- 17.2 (a) When fewer than five races have been completed, a boat's series score will be the total of her race scores.
- (b) When from five (5) to nine (9) races have been completed, a boat's series score will be the total of her race scores excluding her worst score.
- (b) When ten (10) races have been completed, a boat's series score will be the total of her race scores excluding her two worst scores.

## **18 SAFETY REGULATIONS [NP] [DP]**

- 18.1 Each racing day, before the warning signal of the first race of that day, each boat shall pass upwind between the starboard side of the race committee signal vessel and a dan buoy with a blue flag and have her sail number orally acknowledged by the race committee.
- 18.2 A boat that retires from a race or leaves the course area before racing shall notify the race committee as soon as possible.
- 18.3 Boats not leaving the harbour for a day's race shall inform the race office prior to the scheduled first warning signal of that day.
- 18.4 If any one of the race signals AP over A, AP over H, N over H or N over A is made on a race committee vessel, all boats shall return to the harbour immediately.

## **19 REPLACEMENT OF EQUIPMENT [DP]**

Substitution of damaged or lost equipment will not be allowed unless authorized by the race committee. Requests for substitution shall be made to the committee at the first reasonable opportunity.

## **20 EQUIPMENT AND MEASUREMENT CHECKS [DP]**

- 20.1 A boat or equipment may be inspected at any time for compliance with the class rules and sailing instructions.
- 20.2 On the water, a boat can be instructed by a race committee equipment inspector or measurer for the event to proceed immediately to a designated area for inspection.

## **21 OFFICIAL BOATS**

Official boats will be marked as follows:

- a) Race committee vessels will fly a white flag with 'RC'.

- b) Orange rigid inflatable boats of the OA are marked 'Rescue' on the tubes and carry a grey outboard cover with the club insignia.

**22 SUPPORT BOATS [NP] [DP]**

- 22.1 Except in case of emergency, team leaders, coaches and other support personnel shall stay outside areas where boats are racing and shall not communicate with boats from the time of the preparatory signal for the first class to start until all boats have finished or retired or the race committee signals a postponement, general recall or abandonment.
- 22.2 Support boats shall be marked with the National Flag of the country they represent.

**23 TRASH DISPOSAL [NP] [DP]**

Trash may be placed aboard support boats and race committee vessels. A competitor shall not drop trash in the dinghy park.

**24 RADIO COMMUNICATION [NP] [DP]**

Except in an emergency, a boat that is racing shall not make voice or data transmissions and shall not receive voice or data communications that is not available to all boats.

**25 PRIZES**

Prizes will be given as follows: A series prize for every six boats entered before June 1<sup>st</sup>.

**26 DISCLAIMER OF LIABILITY**

Competitors participate in the regatta entirely at their own risk. See rule 4, Decision to Race. The OA will not accept any liability for material damage or personal injury or death sustained in conjunction with or prior to, during, or after the regatta.

**27 INSURANCE**

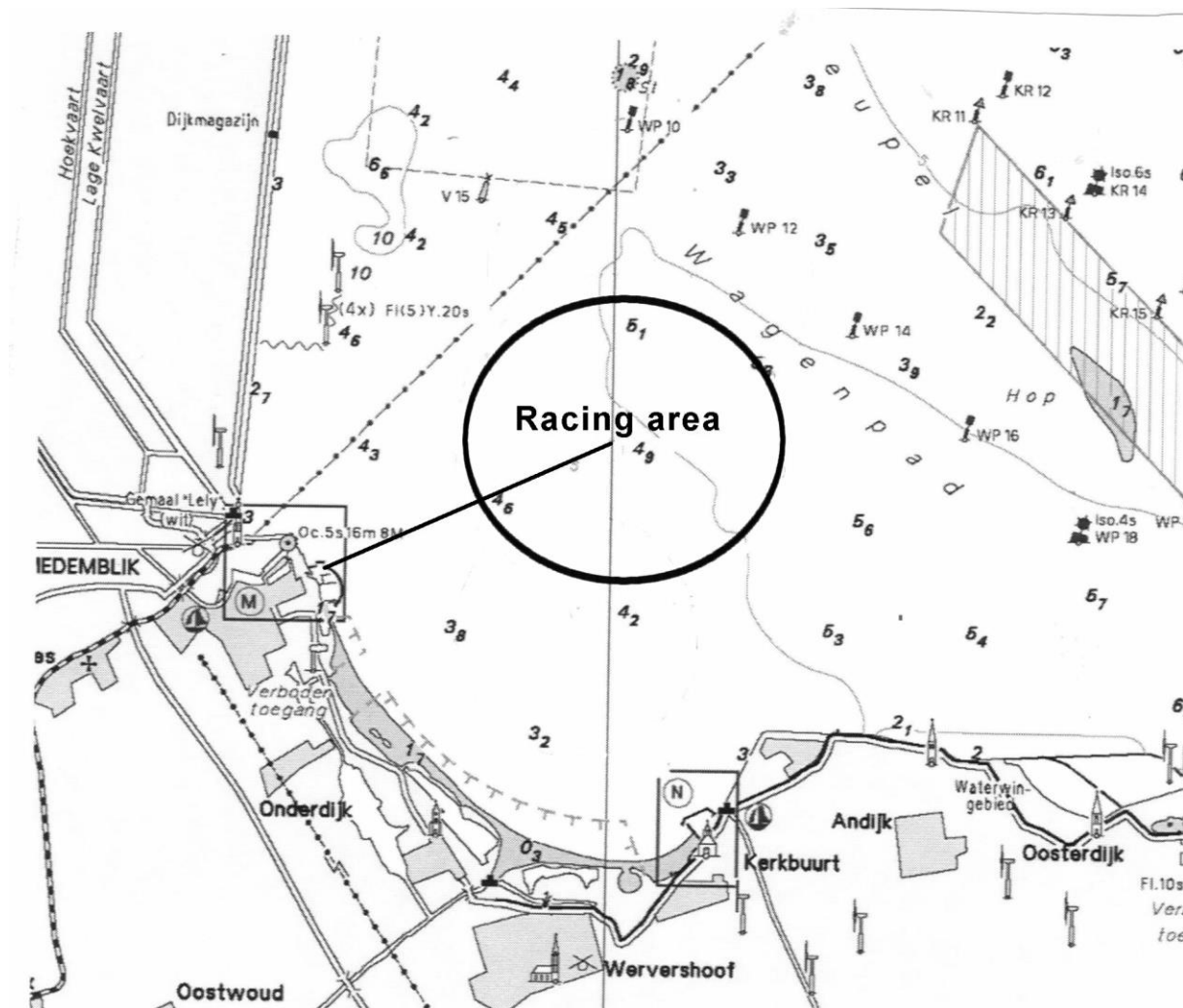
Each participating boat shall be insured with valid third-party liability insurance with a minimum cover of € 1,500,000 per incident or the equivalent.

APPROXIMATE POSITION RACING AREA

Harbor (Regatta Center) – Racing Area (midpoint)

Distance: approx. 1,6 NM

Compass bearing: approx. 70°



## ATTACHMENT B

### MARKS:

Port-end starting mark:

RC vessel displaying an orange flag

Starboard-end starting mark:

Dan buoy with an orange flag

Mark 1:

Orange inflatable buoy

Mark 2 (gate):

Orange inflatable buoys

Alternative mark:

Yellow inflatable buoy

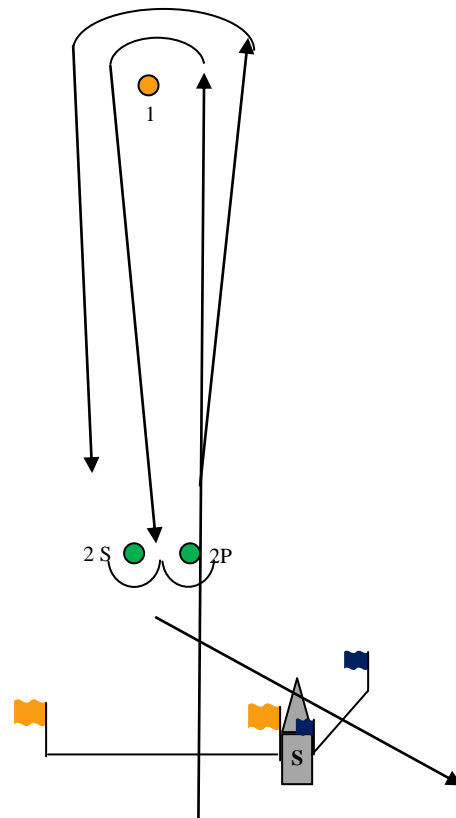
### Please note: Marks are not numbered

Starboard-end finishing mark:

RC vessel displaying a blue flag

Port-end finishing mark

Dan buoy with a blue flag



**Start – 1 – 2 (p/s) – 1 – 2p – Finish**